

PARCEL C
 35,952 SQ. FT
 0.825 ACRES
 (TO BE DEDICATED TO VENETIA
 HOMEOWNERS ASSOCIATION)

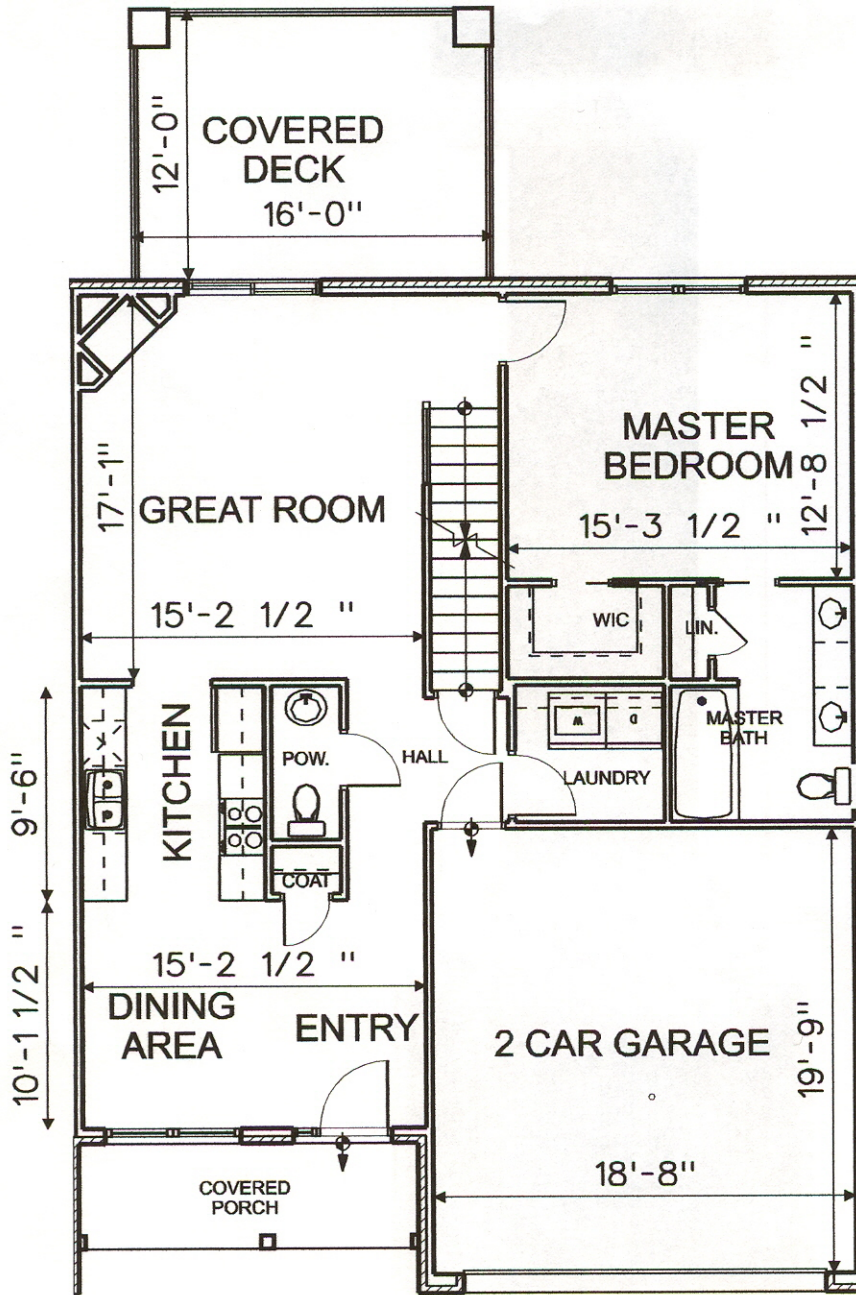
PARCEL B
 82,894 SQ. FT.
 1.903 ACRES
 (TO BE DEDICATED TO VENETIA POINT
 HOMEOWNERS ASSOCIATION)

PARCEL
 48,599 SQ. FT.
 1.116 ACRES

VENETIA ROAD S.
 1006 - 33' R/W

N/F GEORGE & WINNETT
 D.B. 18, 592.32'

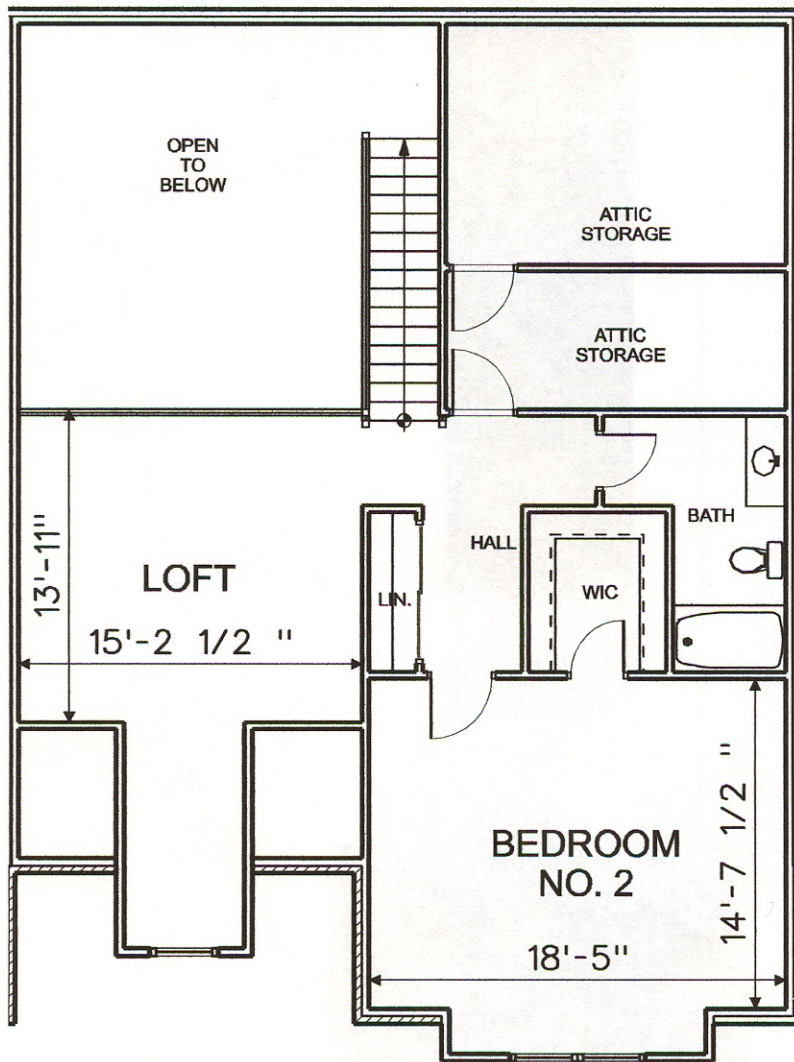
PIR PND
 STA. 6+22.80
 -0.25



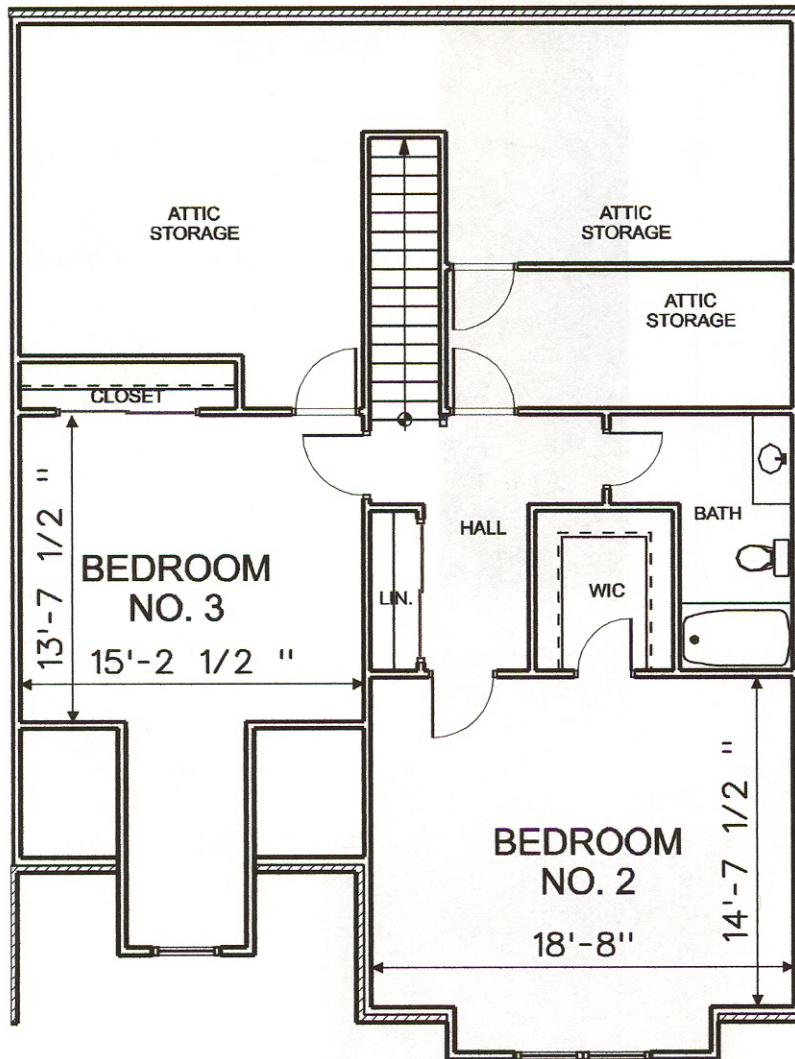
FIRST FLOOR PLAN



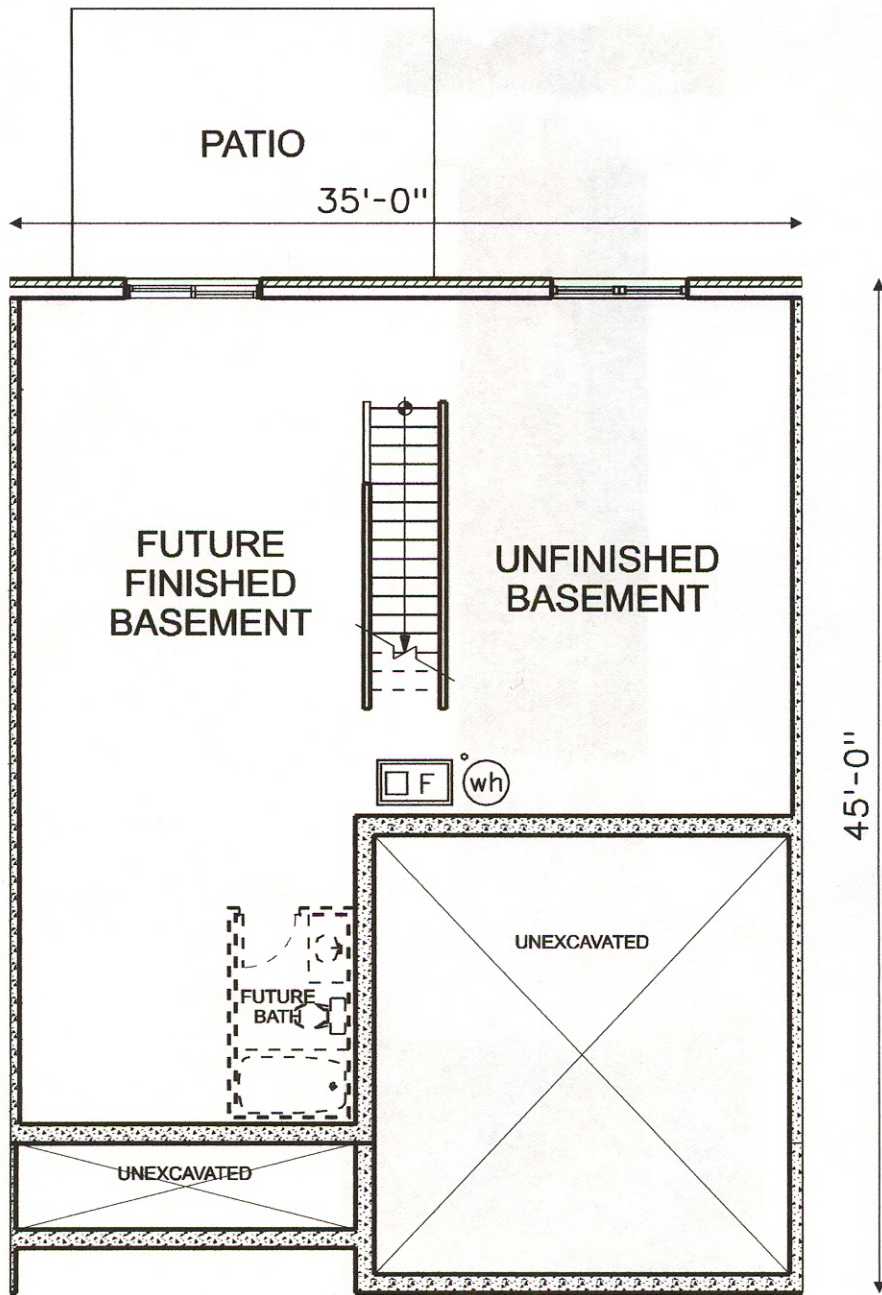
FRONT ELEVATION



SECOND FLOOR PLAN - B



SECOND FLOOR PLAN - A



BASEMENT FLOOR PLAN