

THE JIM DOLANCH
REAL ESTATE TEAM | **CENTURY 21**
Frontier Realty
RELOCATION RESOURCES



How to Make Your Move Much Easier

Any move—across town or the country—takes planning and hard work. That's why the Jim Dolanch Team is here to make it easier!

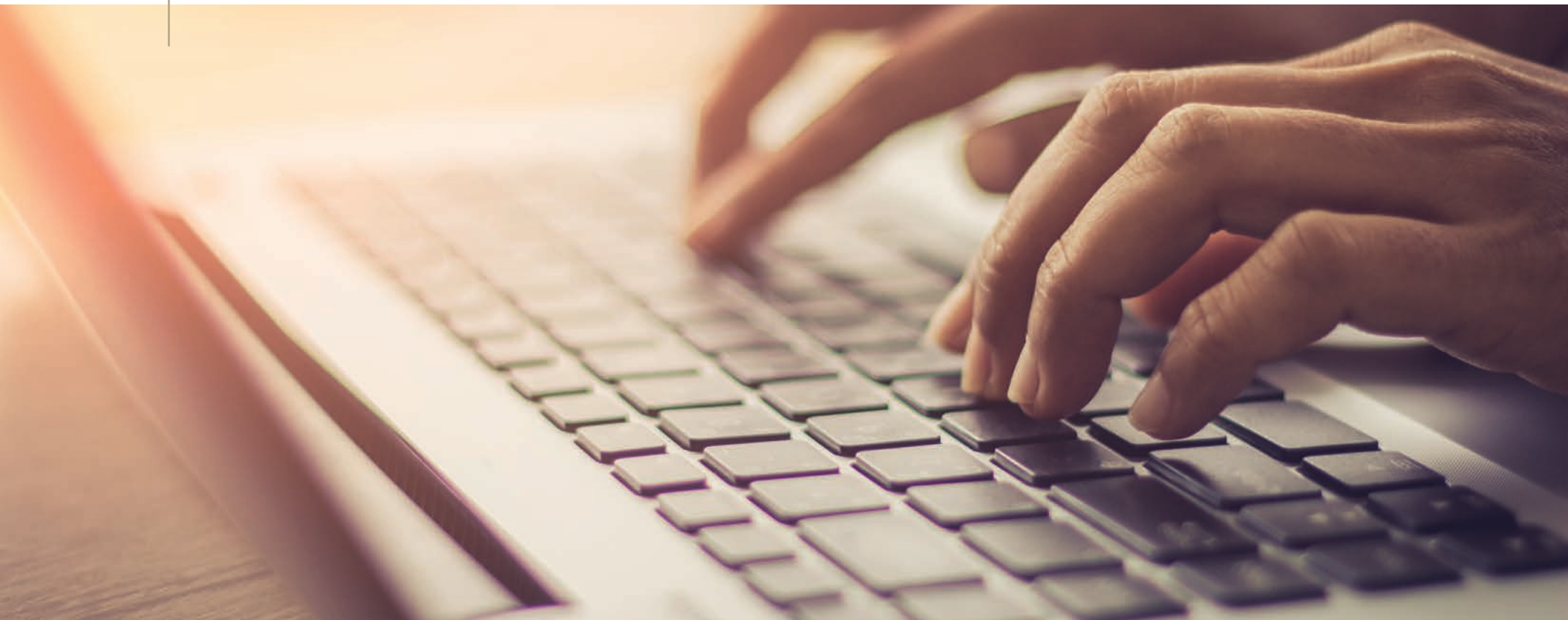
You may encounter some challenges, such as navigating the housing market, getting around in your new area, and finding the resources we all depend on each day.

Since there's so many factors to consider, the Jim Dolanch Team put together this guide to help you navigate your move. After all, it's an exciting time, so let's get moving!

RESEARCH HOUSING COSTS

Housing is vastly different from place to place, whether it's a new zip code in the same city or an entirely different state. Make sure you have ample time to research the local real estate market. These questions are a great place to start (and if you get stuck, the the Jim Dolanch Team has all the answers for the Pittsburgh market!):

- How much are local property taxes?
- How large a home can you afford?
- Is it cheaper to rent or buy a home?





LOOK AT THE WEATHER

One of the biggest considerations people make when they're relocating can actually be the weather! Some like it hot, some like it cold, and some like a little bit of everything. Pittsburgh has four beautiful—yet distinct—seasons. To learn more about the climate in Pittsburgh reach out to us at the Jim Dolanch Team for what you can expect year-round.



RESEARCH HEALTHCARE PROFESSIONALS

Groundbreaking medical treatment and innovations in healthcare draw people to Pittsburgh. From pediatric care to specialty services, to surgeries and aging-related care, residents have easy access to stellar treatments during any stage of life. The University of Pittsburgh Medical Center and Allegheny Health Network are top choices.



TEST YOUR COMMUTE

One of the best ways to explore a new area is to drive around at rush hour on a weekday. This gives you a great idea of what to expect at the least convenient time of day. Plan your commute around realistic conditions for smooth sailing. And, your local agent at the Jim Dolanch Team can find homes for sale near the route you want to take.



PLAN FOR YOUR MOVE

Start packing early by boxing up everything you don't need on a daily basis. By doing the hard work in stages, it won't feel so overwhelming. Make a detailed plan for what you're doing with your belongings, what moving day looks like, and any final details you can't forget!

Here's some helpful packing tips:

- Start packing one room at a time
 - Label, label, label those boxes!
 - Keep a list of significant items in each box
 - Set aside critical documentation, valuables, and anything irreplaceable
-

We're Here to Make Your Relocation Easier

You can move easy: The Jim Dolanch Team is your expert resource for life in the Pittsburgh area. It's our job to find your perfect home, negotiate the best offers, and close the deal without a hitch. And, our insider area knowledge and national recognition sets us apart from other real estate agents in the area.

So, when you're ready to relocate to the Pittsburgh area one of the top places to live in the country, you can count on the resources and prowess provided by the Jim Dolanch Team. Contact us today at (724) 288-8800 or send us a message to get started!



THE JIM DOLANCH
REAL ESTATE TEAM

CENTURY 21
Frontier Realty

| **The Jim Dolanch Team**
| **(724) 288-8800**
| **jim@jimdolanch.com**
| **4121 Washington Road | McMurray, PA 15317**